

# BD-5000 5" Wet Air Grinder



The BD-5000 wet air grinder was designed to accommodate 4" or 5" diamond cup wheels. The BD-5000 is built rugged for daily continuous fabrication production in the most severe working conditions. Water tight sealed bearings provide extended life and smooth handling. To promote safety, this tool has a rear exhaust which is vented through a 3' hose protector. The BD-5000 comes with a 25' water hose, 5' air hose, 3' air/water hose protector, cup wheel removal wrench and handle.

## Specifications

<b>RPM (No Load)</b>	<b>10,000</b>
<b>Shaft Thread</b>	<b>5/8" - 11</b>
<b>Air Inlet</b>	<b>1/4" NPT</b>
<b>Output</b>	<b>650 W</b>
<b>Length</b>	<b>9"</b>
<b>Air Pressure</b>	<b>90 PSI</b>
<b>Air Consumption</b>	<b>15 CFM</b>
<b>Air Compressor Required</b>	<b>5 HP min.</b>
<b>Maximum Wheel Size</b>	<b>5"</b>
<b>Sound (Min.)</b>	<b>78 DB</b>
<b>Sound (Max.)</b>	<b>92 DB</b>
<b>Weight</b>	<b>4 lbs.</b>
<b>Part #</b>	<b>166553</b>



BD-275S



BD-275D

### BD-275S Premium Single Row Cup Wheels

Diameter	Arbor	Part #
4" (102mm)	5/8"-11	166002
5" (127mm)	5/8"-11	166004
7" (178mm)	5/8"-11	166006

### BD-275D Premium Double Row Cup Wheels

Diameter	Nut	Part #
4" (102mm)	5/8"-11	166003
5" (127mm)	5/8"-11	166005
7" (178mm)	5/8"-11	166007



BD-504CG-1



BD-504CG-2

### BD-504 Series Supreme Turbo Cup Wheels

Supreme turbo cup wheels have been designed for quick deburring and form mark removal. The turbo segmented design is ideal for cleanup and finish work.

#### BD-504CG-1

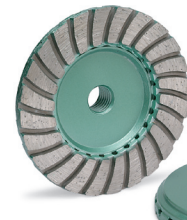
Diameter	Nut*	Segments	Part #
4" (102mm)	5/8"-11	8	158687
4-1/2" (114mm)	5/8"-11	8	158699
5" (127mm)	5/8"-11	9	158729
7" (178mm)	5/8"-11	12	158733

\*Available Arbor 7/8" - 5/8"

#### BD-504SG-2

Diameter	Nut*	Segment	Part #
4" (102mm)	5/8"-11	14	158689
4-1/2" (114mm)	5/8"-11	14	158700
5" (127mm)	5/8"-11	16	158731
7" (178mm)	5/8"-11	24	158735

\*Available Arbor 7/8" - 5/8"



### BD-840PR Dry Turbo Grinding Wheels

Designed for very aggressive dry grinding of granite and other hard materials. High-quality diamond content and high-segmented rim for long working life.

Diameter	Grit	Nut*	Part #
4" (102mm)	Coarse	5/8"-11	840040
4" (102mm)	Medium	5/8"-11	840042
4" (102mm)	Fine	5/8"-11	840044
5" (127mm)	Coarse	5/8"-11	840050
5" (127mm)	Fine	5/8"-11	840054
6" (152mm)	Coarse	5/8"-11	840060
7" (178mm)	Coarse	5/8"-11	840070
7" (178mm)	Medium	5/8"-11	840072
7" (178mm)	Fine	5/8"-11	159317

\*Available Arbor 7/8" - 5/8"



BD-400BDB



BD-480SDR

### BD-400BDB Brazed Diamond Profile Bits

For profiling granite, marble and limestone. Fits Barranca BD-125WP and BD-2321WR.

Diameter	Profile / Radius	Nut	Part #
3-1/2" (89mm)	A - 3/8"	5/8"-11	400038
3-1/2" (89mm)	B - 1/2"	5/8"-11	400012
4" (102mm)	C - 3/4"	5/8"-11	400034
4" (102mm)	E - Bevel	5/8"-11	400040



### BD-480SDR Segmented Diamond Profile Bits

For profiling granite, marble and limestone. Fits Barranca BD-125WP and BD-2321WR wet polishers.

Shape	Profile/Size	Nut	Part #
Half Bullnose	B-10mm	5/8"-11	480010
Half Bullnose	B-15mm	5/8"-11	480015
Half Bullnose	B-20mm	5/8"-11	480020
Half Bullnose	B-25mm	5/8"-11	480025
Half Bullnose	B-30mm	5/8"-11	480030
Ogee	F-20mm	5/8"-11	480120
Full Bullnose	V-30mm	5/8"-11	480330
Full Bullnose	V-40mm	5/8"-11	480340

